



BROWN CART

Weekly Recycling Service

Leave carts out by 6:00 a.m., and keep carts 4 feet apart.

OK FOR RECYCLING

PAPER

Books (paperback)

Boxes, packages

Carbonless paper

Cardboard (cut to fit in cart)

Catalogs

Cereal boxes

Colored and construction paper

Computer paper

Copy paper

Coupons

Detergent boxes

Egg cartons (paper only; no Styrofoam)

Envelopes with metal clasps



Envelopes with plastic windows

Frozen food packages (remove liners)

Gift wrap (non-metallic)

Junk mail

Magazines

Manila folders

Newspapers and inserts

Office paper

Paper (adhesive/Post-its)

Paper bags

Paper packaging with remnant tape

Paper towel and toilet paper tubes



Pizza boxes (no food residue)

Telephone books

Tissue paper (gift type)



METAL

Aerosol cans (empty)

Aluminum cans

Aluminum foil (clean)

Aluminum pie plates

Cookie sheets

Beverage cans

Food cans (clean)

Paint cans (empty, dried, latex)

Pet food cans

Pots and pans

Scrap metal

Small metal items

Steel cans

Tin cans



GLASS

(Rinsed, empty; all colors; lids, caps OK)

Bottles

Beverage containers

Jars

REMINDERS

• Collections are WEEKLY on the same day as your garbage service.

• For missed service, please call within 24 hours.

• **No charge for larger or extra recycle cart.**

• Place all recyclables in brown cart. Cardboard may be placed next to the recycling cart. Please break down boxes.



• Extra cardboard can be recycled 4 times a year free with on-call recycling. See On-Call Recycling in Yard Waste section.

• Be sure cart lid is completely closed.

• Before discarding, consider reusing or donating.

• For recycling and reuse options for other materials call the Recycling Hotline at 1-800-750-4096 or visit www.ccrecycle.org.



PLASTIC

(Containers only; rinsed, empty; with chasing arrows #1-#7)

Baby wipe containers

Bleach bottles

Buckets without handles

Beverage containers (soda, water, juice)

Detergent bottles

Food containers

Fruit basket (plastic, #1-#7)

Household cleaning containers

Milk jugs

Plant containers (plastic, #1-#7)

Prescription bottles (empty, #1-#7)

Salad dressing bottles

Shampoo, conditioner, toiletry bottles

Tub containers (yogurt, cottage cheese, margarine, #1-#7)

Water jugs

NOT FOR BROWN CART

⊘ Appliances

⊘ Batteries

⊘ Ceramics

⊘ Electronic waste (including CDs, DVDs & cases)

⊘ Food waste

⊘ Garbage

⊘ Hangers (metal or plastic)

⊘ Hazardous waste

⊘ Ink cartridges

⊘ Milk cartons

⊘ Mirrors, windows

⊘ Plastic-coated paper

⊘ Plastic bags

⊘ Plastic wrap, packaging

⊘ Restroom waste

⊘ Sharps (needles, syringes, lancets)

⊘ Styrofoam To-go cups and food packaging

⊘ Waxed paper

⊘ Yard waste



GREEN CART

Weekly Yard Waste Service

Leave carts out by 6:00 a.m., and keep carts 4 feet apart.

OK FOR RECYCLING

Brush	House plants	Tree branches 3 inches or less in diameter, 3 feet or less in length
Cactus	Lawn clippings	Weeds
Flower cuttings	Leaves	Wood chips
Flowers	Prunings	Yard waste
Garden trimmings	Shrubbery	
Grass	Straw	
Hay		

ON-CALL YW & RECYCLING CLEANUPS

Recycle extra yard waste (YW) or corrugated cardboard or both with up to 4 free on-call recycling cleanups per year. Household batteries can be recycled **FREE** with your on-call recycling cleanups. To schedule a recycling cleanup, please call (925) 685-4711 or visit www.republicservices.com/site/pacheco-ca and request the service online.

Recycling cleanups are in addition to weekly yard waste and recycling service and are scheduled for collection on the same day as your regular recycling and yard waste service. If you request a collection on a day other than your regular recycling and yard waste service day, a fee will apply.

Extra Yard Waste

- After filling yard waste cart, place extra leaves and yard clippings in cardboard boxes, paper bags and containers that are 32 gallons or less in volume. Maximum 50 lbs. per container. (No plastic bags.)
- Containers will not be taken away.
- Tree branches and prunings must be 3 feet or less in length and 3 inches or less in diameter. Bundle with string or cord.
- Place extra yard waste at curb by 6 a.m. of your pickup day or the night before.
- Keep extra material at least 4 feet away from carts.

Corrugated Cardboard

- Flatten corrugated cardboard and trim to 4 feet or less on each side. Bundle with cord or string. No maximum on bundle's thickness if less than 50 lbs.
- Place cardboard at the curb by 6 a.m. of your pickup day or the night before.
- Place the extra material next to your brown recycling cart.

Household Batteries

- Place batteries in a clear, quart-size plastic bag, i.e., Ziploc. Single-use AA, AAA, C, D and 9V batteries only. No rechargeables.
- Place bagged batteries next to your brown recycling cart (**NOT in carts**).



FIRE DANGER!

Cell phones with batteries can be flammable. Please take cell phones to an electronics recycling facility.



REMINDERS

- **NOT** acceptable for regular or on-call yard waste recycling:
 - 1) Plastic bags
 - 2) Rocks and concrete
 - 3) Sod and dirt
 - 4) Loose fruits and vegetables
 - 5) Tree trunks, stumps and branches more than 3 inches in diameter or more than 3 feet in length
 - 6) Palm fronds
 - 7) Pet waste
 - 8) Hazardous waste
 - 9) Garbage and inorganic materials including recyclables like plastics, glass, metal and paper.
 - 10) Wine corks (plant-based or synthetic). BevMo may accept them for recycling.
- Collection is **WEEKLY** on the same day as garbage service.
- For missed service, please call within 24 hours.
- **No charge for larger or extra yard waste cart.**
- Be sure all materials fit inside the cart with lid closed.
- Keep cart 4 feet away from other carts and any objects including cars and mailboxes.



Leave carts out
by 6:00 a.m.,
and keep carts
4 feet apart.

BLUE CART

Weekly Garbage Service

ON CALL CLEANUPS

Residents in Clayton may schedule two **free** cleanups per year at any time. Cleanups can be used to discard up to two cubic yards (approx. fourteen 32-gallon bags) of extra trash and items that are too large for garbage carts. To schedule a cleanup, call Republic Services at (925) 685-4711. You can also schedule a pickup online by visiting our website at www.republicservices.com/site/pacheco-ca.

Guidelines for Cleanups

- ✓ Place items at the curb by 6 a.m., preferably the night before your cleanup day.
- ✓ All items must be stacked in one place.
- ✓ Cut and tie branches, prunings or wood so bundles are 4 feet or less in length and less than 24 inches in diameter. Tree stumps cannot be collected.
- ✓ Bag or tie items with rope, cord or string strong enough to keep bundles intact or place in containers, including metal and plastic trash cans. All containers will be taken away.
- ✓ Place cleanup items in a single pile at a distance of 5 feet or more from your garbage cart.
- ✓ No loose piles.

Unacceptable Materials

- ⊘ No single item may weigh more than 150 lbs. or be longer than 4 feet. Bags cannot weigh more than 50 pounds.
- ⊘ No large car parts (tires, transmission blocks, engines, etc.), large furniture or mattresses.
- ⊘ No rocks, dirt or concrete.
- ⊘ No tree stumps or large tree trunks.
- ⊘ No microwave ovens, clothes dryers, space heaters, ovens or other appliances with mercury switches. These can be picked up for a fee.
- ⊘ No hazardous wastes including paint, oil filters, motor oil, car batteries, anti-freeze, solvents, pesticides and cleaners. Hazardous waste must be taken to the Central Sanitary HHW Facility at 4797 Imhoff Place, Martinez.

WHAT SHOULD GO IN YOUR GARBAGE CART

Please place as much **green waste** as possible in your **green yard waste cart**.

Place all the containers and materials listed in the **recycling** section in your **brown recycling cart**.

Everything else goes into your **blue garbage cart**.

If you have any questions, call us at (925) 685-4711.

REMINDERS

- For missed service, please call within 24 hours.
- Be sure all materials fit inside the cart with lid closed.
- Before discarding items, consider reusing or donating.
- Place only trash in your garbage cart.
- Leave the cart out the night before or by 6 a.m. of your collection day.
- Leave at least four (4) feet of space between your garbage cart and any other object including your yard waste and recycling carts and from any street obstacles such as mailboxes, cars or portable basketball hoops.
- Don't place recyclables, yard waste or hazardous waste in garbage carts.

BULKY ITEMS

Free Pickup for E-Waste, Too

Clayton residents may have any item listed here, such as mattresses, furniture, appliances and other large pieces, picked up at no charge at the curbside. Just call the office at (925) 685-4711 to schedule.

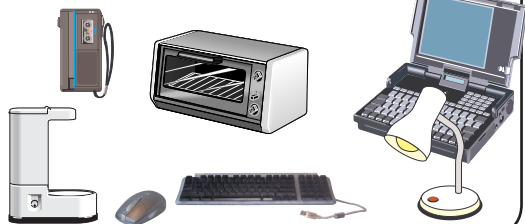
- Air conditioner (pickup & Freon removal)
- Computer monitors
- Couch/sofa
- Dishwasher
- Dryer
- Electronics
- Freezer (pickup & Freon removal)
- Hot water heater
- Hide-a-bed
- Double mattress
- Double box spring
- Twin mattress
- Twin box spring
- Queen mattress
- Queen box spring
- King mattress
- King box spring
- Refrigerator (pickup & Freon removal)
- Stove
- Washer
- Swamp cooler



- Tires (less than 19 inches)
- Tires with rim (less than 19 inches)
- Tires (larger than 19 inches)
- Tires with rim (larger than 19 inches)
- TV (32 inches or smaller)
- TV (32 inches or larger)

Free E-Waste Pickups

There is no charge for collection of e-waste in Clayton. Call (925) 685-4711 to schedule a pickup.



Recycle Batteries, CFLs

Household batteries and compact fluorescent lights can be recycled curbside. Place batteries in quart-size Ziploc bag, seal and leave next to your brown recycling cart. Do the same in a separate Ziploc bag for CFLs.



SERVICES

Just Give Us a Call

Whoops! Too much trash. Lid should close.



Extra Material

Please call at least 24 hours prior to your regular collection day to arrange for a pickup of extra garbage.

Our customer service representatives will be glad to provide you information about rates and scheduling.

Phone (925) 685-4711.

Going on Vacation?

Please schedule vacation holds in advance:

- Minimum 2 weeks per hold.
- Maximum 4 holds per year.

Call customer service at (925) 685-4711 for additional information.

Holiday Treecycling

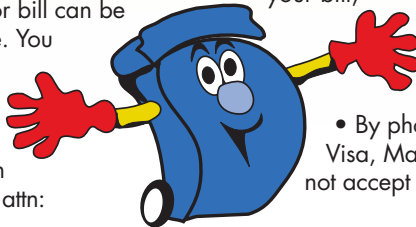


Republic Services will notify you in your December solid waste bill of the holiday tree recycling program. No flocked trees will be taken.

How to Reach Us; New Online Service

Questions about your service or bill can be answered by Customer Service. You can:

- Call one of our representatives at (925) 685-4711.
- Write us at 441 N. Buchanan Circle, Pacheco, CA 94553, attn: Customer Service Manager.
- Visit the Republic Services web site at: www.republicservices.com/site/pacheco-ca where you can order a cart repair, schedule a cleanup, report a missed collection and request other services online.



• In person at the Republic Services office at 441 N. Buchanan Circle, Pacheco;

• By phone with American Express, Visa, MasterCard or Discover. We do not accept checks over the phone.

Holidays Observed

Only Christmas and New Year's Day affect collections.

If your pickup day falls on those holidays or on a day following them that week, service will be one day later even if it falls on Saturday.

Cart Sizes

Carts are available in the following sizes:

- Garbage: 20, 32, 64, 96 gallons
- Recycling: 64 gallons
- Yard Waste: 64 gallons
- Cart dimensions:

Size	Height	Width	Depth	Footprint
20 gal.	32.6"	19.8"	18.0"	<2.0 sq. ft.
32 gal.	38.5"	19.0"	22.0"	2.0 sq. ft.
64 gal.	42.0"	25.5"	27.0"	2.5 sq. ft.
96 gal.	46.5"	26.5"	33.5"	3.0 sq. ft.

Goodbye. I have to stay home.



Missed Collection?

Please call within 24 hours to report that your garbage, recycle or yard waste cart has not been serviced.

Moving?

If you are moving, please leave your recycling, yard waste and garbage carts in a secure location for the next resident. Call us to discontinue service.

The ECO-PAGE



Helping You Help the Earth!

What Happens to Recyclables & Garbage

Q. What happens to my recyclables after I put them in my brown cart?

A. After your recyclables are emptied into our truck, they are taken to Pacific Rim Recycling in Benicia.

The recyclables travel down a conveyor belt, and employees separate them into different commodities. The different material types are then baled together and sold.

Q. What happens to my garbage after I put it in my blue cart?

A. Anything put in the garbage becomes trash forever. What you put in your blue garbage cart (even recyclables like cardboard, cans, bottles) is taken to our Martinez Transfer Station to be compacted, then to Keller Canyon Landfill in Pittsburg.

Employees do NOT sort through garbage and pick out recyclable items. Please put all recyclable items in the brown recycling cart!

Why You Cannot Recycle...

Styrofoam: There is no market for Styrofoam because it is low quality, cheaper to produce from virgin materials and usually contaminated with food. Since it is a useless commodity, it goes straight to the landfill. However, a large amount of Styrofoam products end up as litter and reach the ocean, where they break down into smaller bits and are ingested by birds and sea animals. Avoid Styrofoam whenever you can and tell your favorite restaurants to switch to greener packaging.



Milk Cartons: A waxy coating on paper or cardboard diminishes the value of the commodity and makes recycling difficult.



Chipbags & Aseptic Packaging:

Both packaging materials are not recyclable because they are an amalgam of multiple material types. Aluminum foil is bound to plastic or in the case of aseptic packaging aluminum is bound to waxy cardboard. These materials cannot be separated for recycling so unfortunately they have to go in the garbage.



Reuse Area at Central Sanitary

Need some paint? Gardening products? Cleaning chemicals? Stop by the Reuse Room at Central Sanitary's HHW Facility to drop off unwanted chemicals and pick up new ones, all at no charge! Open Monday through Saturday, 9 a.m. to 3:30 p.m.



Old Pills Piling Up?

Don't dump medicines and over-the-counter drugs down the drain or toilet. Flushed drugs enter waterways, harming people, animals and the environment. Wastewater facilities cannot remove these chemicals. Remove labels and place containers in sealable plastic bag. Dispose of safely at:



- Police station, City Hall 2nd floor, 6000 Heritage Trail, Clayton (9-5, M-F), ph: (925) 673-7350.
- Sheriff's Substation at County Hospital, 2500 Alhambra Ave.; Sheriff's Field Ops Bldg., 1980 Muir Road; Martinez Police, 525 Henrietta St., all in Martinez (8-5, M-F).
- City Hall Lobby, 1666 N. Main St., Walnut Creek (8-5, M-F).

Freecycle, Craigslist

Recycling is the last of the 3 Rs – Reduce, Reuse, Recycle. Incorporate the first two (Reduce & Reuse) into your everyday life through the free services at Craigslist.org and Freecycle.org. They help you find new homes for unwanted goods, and they're great sources of free (or cheap) goods.

Plastic vs. Reusable Bags

Americans use billions of plastic bags per year, many of which end up in the landfill or in the ocean. Consider using canvas or reusable bags at the grocery store. Some stores have reusable bags for purchase and often offer discounts for using reusables instead of plastic or paper bags.



We do not accept plastic bags (or any type of plastic film material) for recycling, but state law requires grocery stores to accept them for recycling. Visit www.plasticbagrecycling.org for information.

Household Hazardous Waste

Motor Oil, Filters, and Cooking Oil

Recycle oil filters and used motor oil outside.

Recycle large amounts of cooking oil at the Central Sanitary District HHW Facility.

- **Oil Filters, Motor Oil**
- Pour **motor** oil into a clear plastic container like a milk jug.
- Tap lid to close it securely.
- Place jug **beside** your recycling cart.
- Maximum 3 gallons of oil per pickup.
- Place oil filters in sealable plastic bag, i.e., Ziploc bag, seal.
- Place bag **beside** your recycling cart.

Cooking Oil

- Pour **cooking** oil into a clear plastic container like a plastic milk jug.
- Tape lid to close it securely.
- Recycle at the Central Sanitary District HHW Facility.



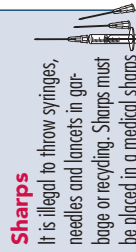
Household Hazardous Waste

It is illegal to throw hazardous waste in your garbage or recycling cart. Recycle your car and household batteries, latex

paint, antifreeze, motor oil, oil filters, fluorescent bulbs, mercury thermometers, solvents, pesticides and other household chemicals **FREE OF CHARGE** at the Central Contra Costa Sanitary District HHW Facility, 4797 Imhoff Place, Martinez. For information, call (800) 646-1431 or visit www.centralssan.org.

Sharps

It is illegal to throw syringes, needles and lancets in garbage or recycling. Sharps must be placed in a medical sharps container and taken to an official drop-off site:



- Police station, 2nd floor, City Hall, 6000 Heritage Trail Clayton, from 9-5, Mon-Fri.
- Call (925) 685-4711 or visit www.republicservices.com/site/pacheco-ca for more sites.

Electronic Waste

Republic Services will pick up at no charge e-waste such as CRTs (televisions, computer monitors), computers, keyboards, printers, fax machines, DVD players, VCRs, radios and other electronics. To schedule a pickup, call (925) 685-4711.



Electronic waste can also be taken to a licensed facility. Local e-waste companies offer free curbside pickup of electronic waste. For a list of e-waste facilities in your area, please visit www.republicservices.com/site/pacheco-ca.

Old Pills Piling Up?

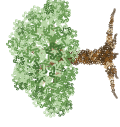
Dispose of old medicines at the Clayton police station, 2nd floor, City Hall, 6000 Heritage Trail (9-5, M-F), (925) 673-7350, or at:

- Sheriff's Substation, County Hospital, 2500 Alhambra Ave., Martinez (8-5, M-F).
- City Hall Lobby, 1666 N. Main St., Walnut Creek (8-5, M-F).

Remove labels from containers and place in sealable plastic bag.



441 N. Buchanan Circle
Pacheco, CA 94553
(925) 685-4711
www.republicservices.com/site/pacheco-ca



Naturally Sustainable

Republic Services is a green business and helps customers pursue "naturally sustainable" practices.



Leave carts out by 6 a.m. with 4 feet of space around each cart.

Carts at the Curb Line

The City of Clayton's quality community standard calls for no carts at the curb before noon the day before collection, and please remove your carts by 10 p.m. the day of collection.

Printed By A
NY ARE 4



Printed on 100% Recycled Paper
Content Is 100% Post-Consumer Waste



Printed with Soy Ink



GREEN BUSINESS
Since 2000

FIRE DANGER!

Cell phones with batteries can be flammable. Please take cell phones to an electronics recycling facility.



Presorted
First-Class
U.S. Postage Paid
PLEASANT HILL, CA
PERMIT NO. 122

2015 CUSTOMER GUIDE

Garbage, Recycling, Yard Waste Services



Clayton



REPUBLIC
SERVICES



Naturally Sustainable